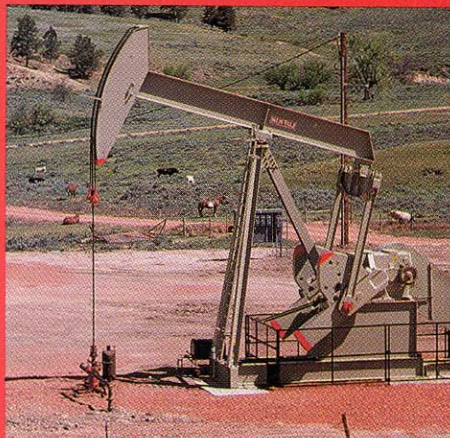
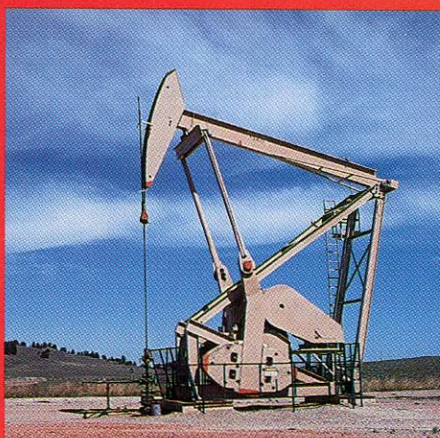


LUFKIN

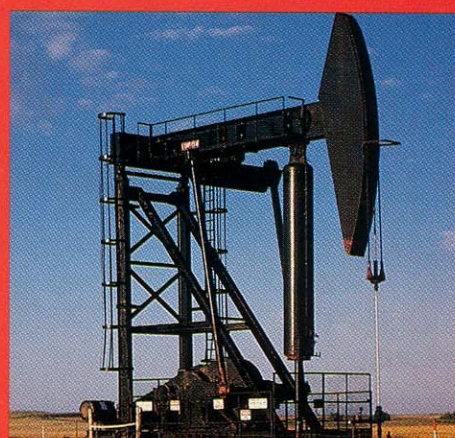
PUMPING UNITS



CONVENTIONAL



MARK II UNITORQUE



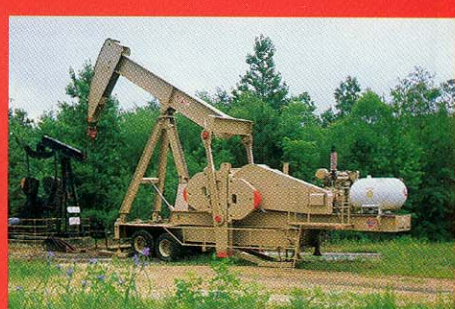
AIR BALANCED



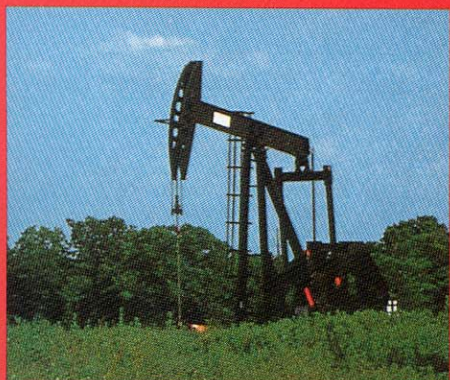
LOW PROFILE



REVERSE MARK II



CONVENTIONAL PORTABLE



AMERICAN UNIT



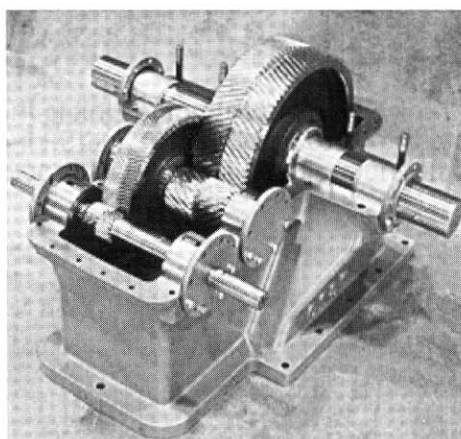
SERVICE CENTERS



CHURCHILL BEAM BALANCED

Why is the LUFKIN Pumping Unit so Reliable?

The LUFKIN design field proven by over 70 years of service.



- LUFKIN research and development perfected nodular iron Herringbone gears, now the world standard for pumping unit gear reducers.
- Less sensitive to mis-alignment.
 - Higher torque capacity than required by API.
 - Bronze bushings on the crankshafts need no adjustment at assembly and can be replaced without removing the cranks.

LUFKIN designed and manufactured Herringbone (Double Helical) Gears have proven to be the standard of excellence for pumping unit gear reducers. Herringbone Gears are less sensitive to mis-alignment and withstand load reversals better than other types of gears. Heavy Duty sleeve bushings on the crankshaft and straight roller bearings on the high speed and intermediate shafts need no adjustment at assembly or when field service is required. The nodular iron gears with high strength alloy pinion used by most manufacturers of pumping units were pioneered by LUFKIN over thirty (30) years ago.

LUFKIN's Quality Policy

LUFKIN's Quality Policy clearly defines our understanding of Quality:

At Lufkin Industries, quality does not happen by chance... Quality happens because we make sure it happens.

We define quality as error free products and service that meets or exceeds customer requirements.

Quality performance is achieved through teamwork and commitment to a process of continuous improvement.

LUFKIN's reputation for quality is well established. To ensure that our products and service continue to lead the industry in reliability and durability, LUFKIN has invested millions of dollars in state-of-the-art manufacturing facilities and equipment and human resource talent and training.

LUFKIN Sucker Rod Pumping Units are available to handle most installation problems and down hole conditions.

Computer service is available to aid in sizing pumping units, sucker rods, and pumps to insure maximum production and optimum utilization of equipment.

All LUFKIN pumping units with the API monogram signify that they meet or exceed the latest API standard for the design of sucker rod pumping units.

In addition to API models, LUFKIN also designs and manufactures non-API sizes at customer request.

Explanation of Pumping Unit Designations

Type Pumping Unit:

- A—Air Balanced
- C—Conventional (Standard)
- CM—Conventional (Portable)
- M—Mark 11 Unitorque
- LP—Low Profile
- RM—Reverse Mark

C - 228D-246-86

Peak Torque Rating In Thousands of Inch Pounds

D-Double Reduction Gear Reducer

Polished Rod Load Rating In Hundreds of Pounds

Stroke Length In Inches

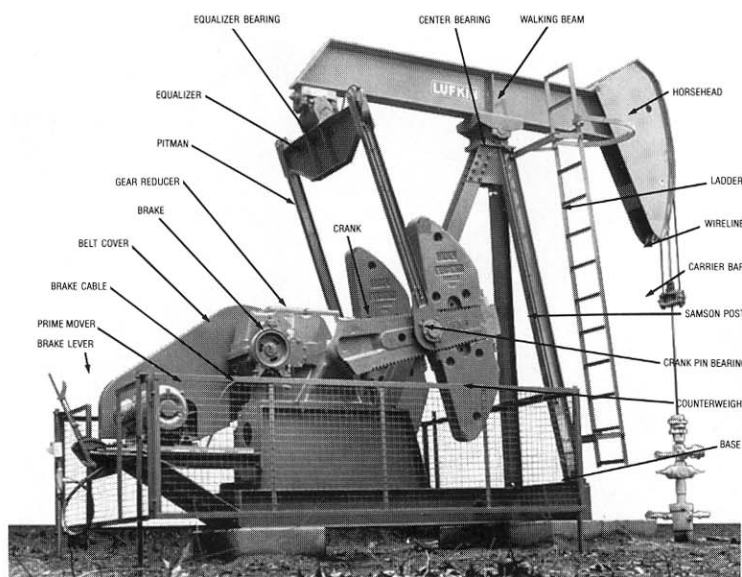
Parts Replacement

The use of parts which do not meet LUFKIN's design and specifications could result in serious injury to personnel near the pumping unit. When ordering spare parts, the designation

and serial number of the unit must be given. Refer to the latest issue of operator's manual for instruction of the safe way to install or perform maintenance on pumping units.

LUFKIN Conventional Crank Balanced Units

The LUFKIN Conventional Crank Balanced Pumping Unit is the most widely known and is available in sizes up to the C-1824D-365-192, a 192 inch stroke unit with a polished rod capacity of 36,500 pounds and a 1,824,000 inch pound double reduction gear box.



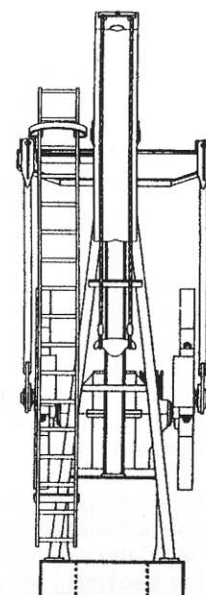
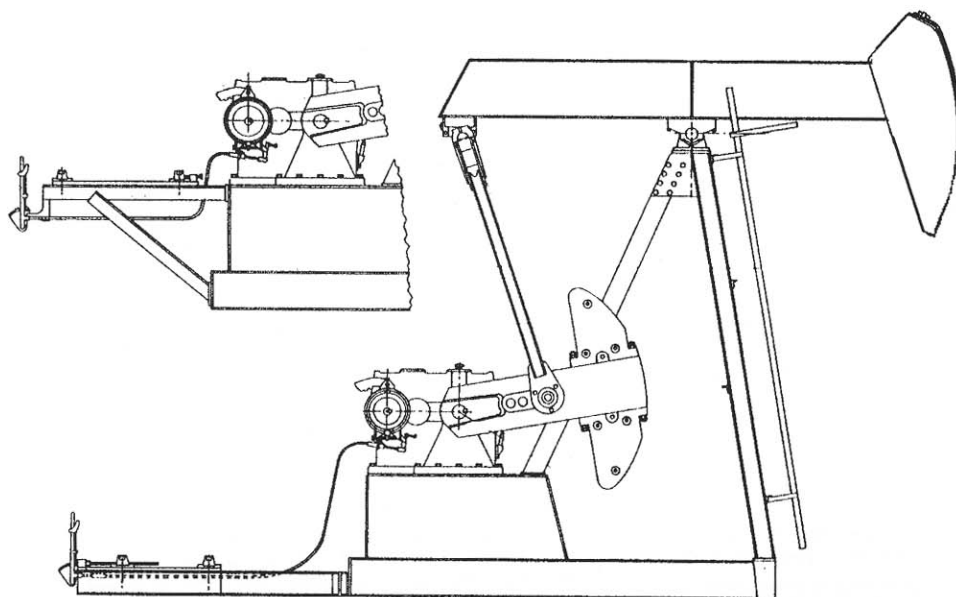
Conventional Pumping Unit Nomenclature



Conventional Units

The LUFKIN Conventional Crank Balanced Unit, widely known and accepted, is the old reliable "work horse" of the oil patch. This is the most universally adaptable unit in the "LUFKIN LINE," simple to operate and requires minimum maintenance. Shown here is the two-point base design installed on front and rear concrete blocks.

Conventional Pumping Unit



LUFKIN Mark II Unitorque Pumping Units

The LUFKIN MARK II Unitorque Pumping Units are available in sizes up to the M-1824D-427-216, a 216 inch stroke unit with a polished rod capacity of 42,700 pounds and a 1,824,000 inch pound double reduction gear box.



*Mark II Unitorque "Two-Point" Suspension

"Two-Point" Suspension bases are standard for all LUFKIN Mark II Pumping Units. The "two point" base reduces concrete requirements approximately 80% by permitting the use of small salvageable pre-cast concrete blocks in front and rear. This simple foundation assures a completely portable unit and foundation which requires a minimum of installation time.

*Crank guards not shown for clarity.

The Mark II's unique UNITORQUE geometry is characterized by three (3) design configurations which reduce the rod load and peak torque over that of a conventional pumping unit.

A. Shifting the gearbox from directly under the equalizer towards the Samson post turning in a preferred direction of rotation, creates an upstroke of 195° and a downstroke of 165°.

B. Placing the equalizer between the horsehead and the Samson post creates a "push-up" or "Class 3" lever system.

The 195° upstroke, coupled with the front-mounted geometry, reduces the acceleration at the beginning of the upstroke where the load is greatest, thereby effecting a reduction in polished rod load. Locating the cross-yoke forward of the gear reducer creates a greater mechanical advantage for lifting the heavy load on the upstroke, and a lesser mechanical advantage for the reduced downstroke load, i.e., the maximum upstroke torque factor is reduced while the maximum downstroke torque factor is increased.

C. An angular offset in the crank produces a more effective counterbalance torque which, at the beginning of the upstroke, "lags" the well load torque approximately 7 1/2°. Similarly, at the beginning of the downstroke, this same offset condition produces a counterbalance torque which "leads" the well load torque approximately 7 1/2°.

Independently, these features would not produce a relatively

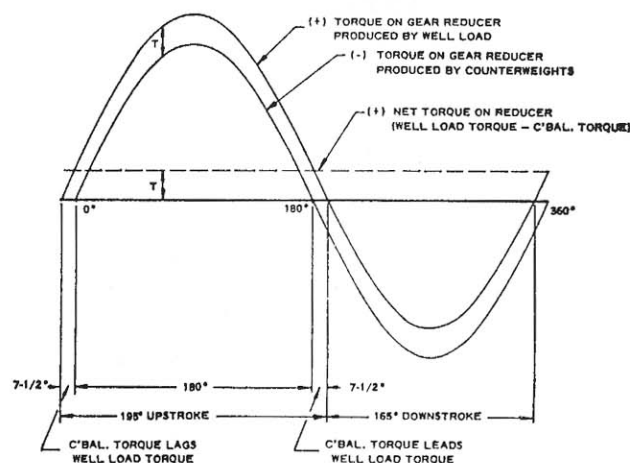


Mark II Unitorque

The Mark II unit, due to its unique geometry and phased counterbalance feature, lowers peak torque and horsepower requirements. The unusual geometry of the Mark II produces a somewhat slower up stroke and faster downstroke with reduced acceleration where the load is greatest, resulting in lower peak loads and longer rod life.

uniform torque, but working together a "unitorque" system is obtained which reduces the torque on the gearbox up to 35% as well as lowering power costs and often, prime mover size.

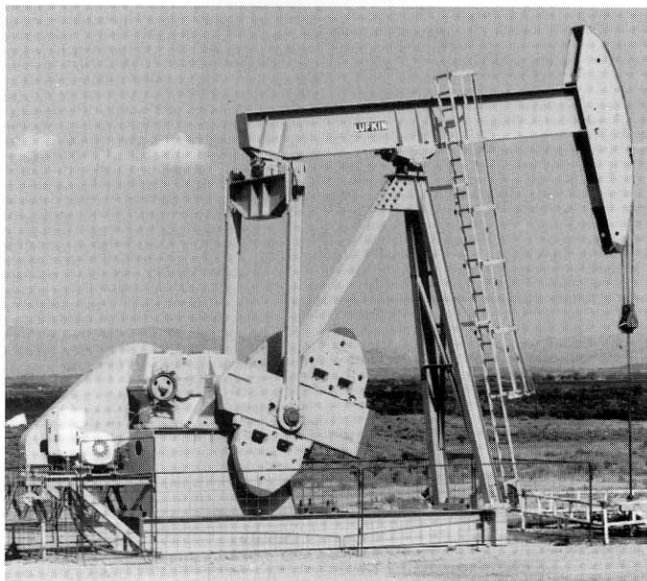
Illustration showing how a uniform torque can be obtained under ideal conditions.



NOTE: The Mark II Unit must be operated in a counterclockwise direction (Standing at the side of the unit with the well-head to the right.)

LUFKIN Reverse Mark (RM) Pumping Units

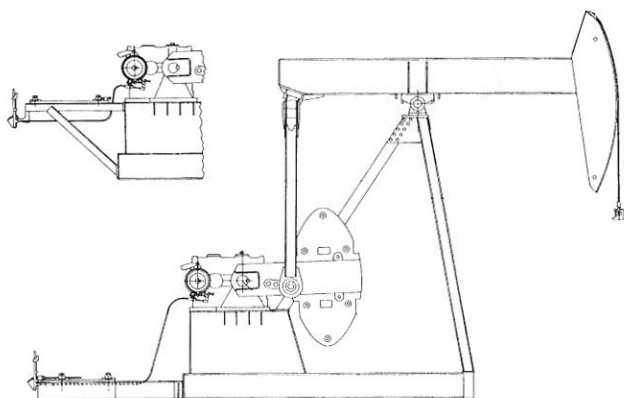
The LUFKIN RM Series Pumping Units are available in sizes up to RM-1824D-427-192, a 192 inch stroke unit with a polished rod capacity of 42,700 pounds and a 1,824,000 inch pound double reduction gear box.



Reverse Mark Units

The LUFKIN RM Series Pumping Unit offers the customer an improved alternative to the conventional type geometry. Although similar in appearance to the LUFKIN Conventional pumping unit, the RM unit geometry can reduce the torque and power requirements on many pumping applications. In some instances a smaller reducer and prime mover can be used.

LUFKIN RM Pumping Units



LUFKIN Conventional Portable Units

The LUFKIN Conventional Portable "Roadrunner" Pumping Units are available for lease only in sizes up to the CM-456D-305-120, a 120 inch stroke unit with a polished rod capacity of 30,500 and a 456,000 inch pound double reduction gear box.

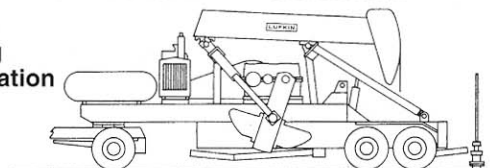


Conventional Portable Units

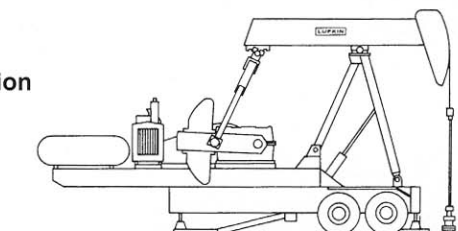
The LUFKIN "Roadrunner" is a trailer-mounted, self-contained conventional pumping unit that lowers for legal highway transportation and can be erected and pumping in a few minutes at the well site. These units are available for rental or lease for such typical applications as removing frac fluids, stripper well pumping, gas well dewatering, temporary production, well testing, and as an alternative to swabbing units.

LUFKIN Conventional Portable Pumping Units General Dimensions

**Portable
Traveling
Configuration**



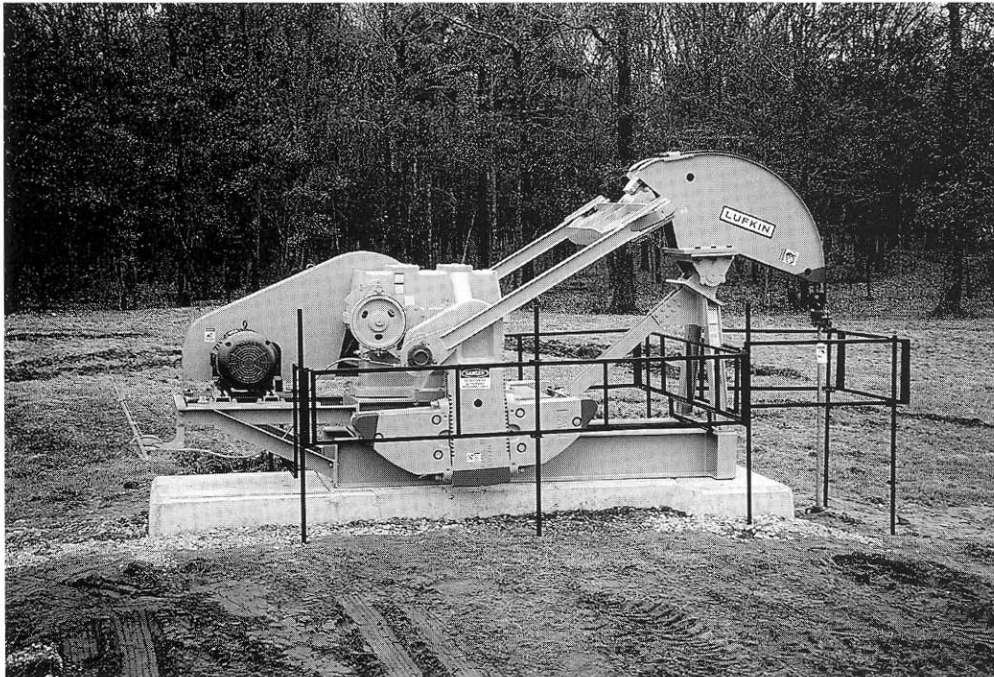
**In-Place
Pumping
Configuration**



**For further information and specific data on any LUFKIN Pumping Unit
please call Oilfield Sales Department, LUFKIN Industries, Inc.:
Tel (713) 468-7804, Fax (713) 468-6880.**

LUFKIN Low Profile Unit

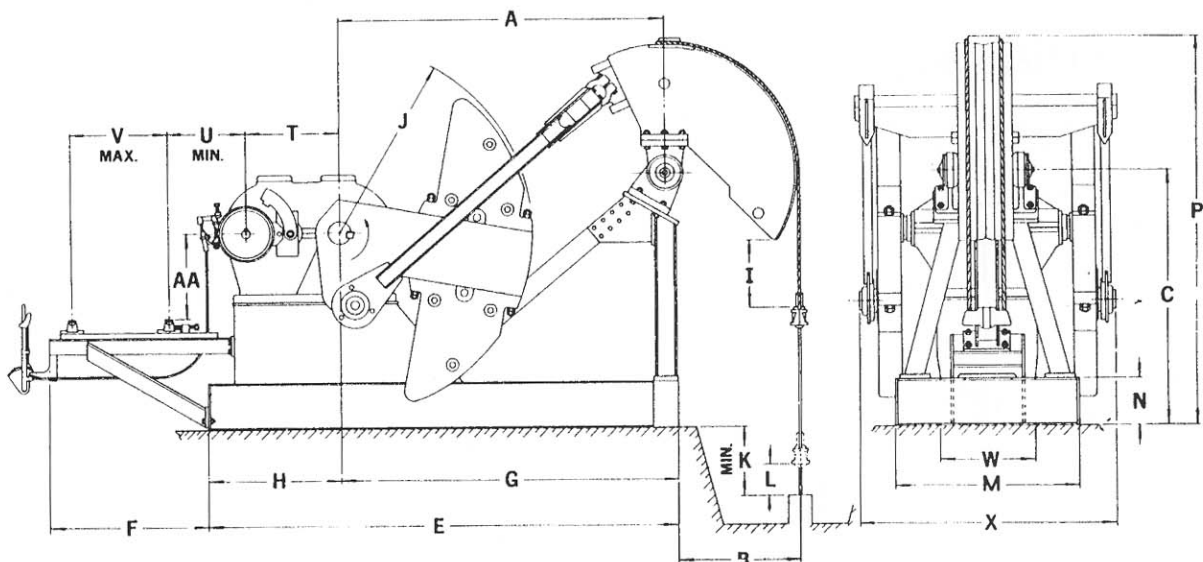
The LUFKIN Low Profile Pumping Units are available in sizes up to the LP-320D-246-86, a 86 inch stroke unit with a polished rod capacity of 24,600 pounds and a 320,000 inch pound double reduction gear box.



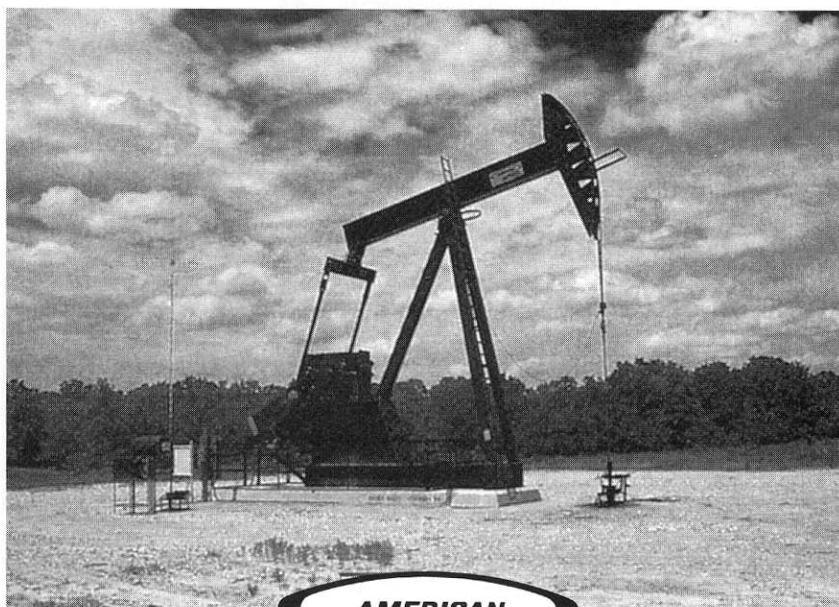
Low Profile Units

The LUFKIN Low Profile unit is a compact unit designed for installation in the fields irrigated by traveling sprinkler systems or in urban areas where the low profile feature may be desirable. Several sizes of the unit can be shipped from the factory completely assembled.

LUFKIN Low Profile Pumping Units General Dimensions



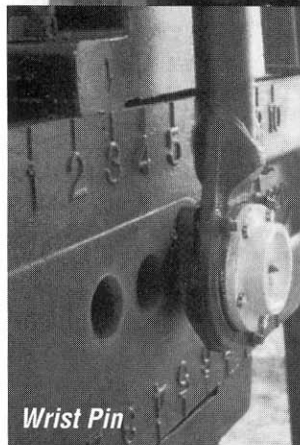
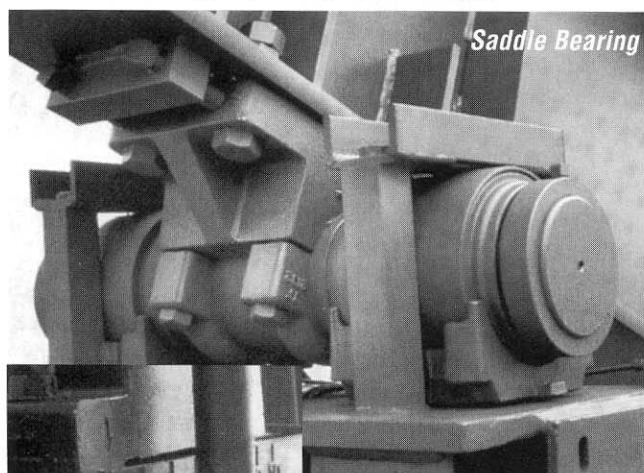
UNIT	A	B	C	E	F	G	H	I	J	K	L	M	N	P	T	U	V	W	X	AA
LP-320D-246-86	8'-6"	45 ³ / ₄ "	7'-4"	13 ³ / ₄ "-11 ³ / ₄ "	52 ³ / ₄ "	8'-9 ¹ / ₂ "	52"	10 ¹ / ₂ "	64"	24"	6"	51 ³ / ₄ "	16 ³ / ₈ "	11'-6"	34"	31 ³ / ₈ "	31 ¹ / ₄ "	43"	7'-2"	40 ⁷ / ₈ "
LP-228D-173-64	7'-10"	41 ¹ / ₂ "	6'-0"	11'-10 ¹ / ₂ "	"	8'-1 ¹ / ₂ "	45"	12"	56"	19"	6 ³ / ₈ "	"	"	9'-11"	30"	29 ¹ / ₂ "	30"	37"	6'-6 ¹ / ₂ "	24 ¹ / ₈ "
LP-160D-173-64	"	"	"	11'-6"	40 ³ / ₈ "	"	40 ¹ / ₂ "	"	"	"	"	"	"	26"	17 ¹ / ₈ "	30 ¹ / ₄ "	32"	70 ¹ / ₈ "	28 ³ / ₁₆ "	"
LP-114D-133-54	7'-0"	31 ¹ / ₈ "	66"	10'-2 ¹ / ₄ "	"	7'-3 ¹ / ₄ "	35"	17"	50"	"	6 ⁷ / ₁₆ "	48 ¹ / ₄ "	12 ¹ / ₄ "	8'-6"	24"	13 ³ / ₈ "	29 ¹ / ₄ "	25"	66 ³ / ₄ "	22 ³ / ₁₆ "



Features

- The Producer devotes a full 186° of its clockwise crank rotation to the upstroke where it can do more work.
- Dependable, improved geometry of The Producer effects lower cost.
- The Producer can be run in either direction and used with either steel or fiberglass rods.
- The Producer maintains its structural integrity and its ability to perform across a varied range of well conditions.

High quality bearings.



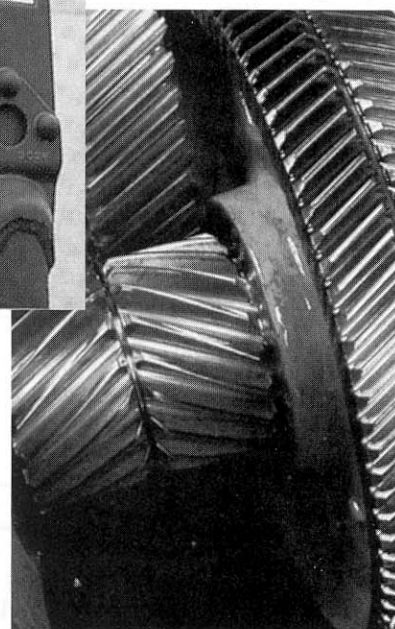
Wrist pin bearings are self-aligning spherical roller bearings with a one-piece outer race that eliminates field adjustment. All units use tapered roller bearings at the saddle and equalizer bearings.



The patented Springflex® Equalizer's vibration-free operation equalizes pitman loads and maintains rigidity.

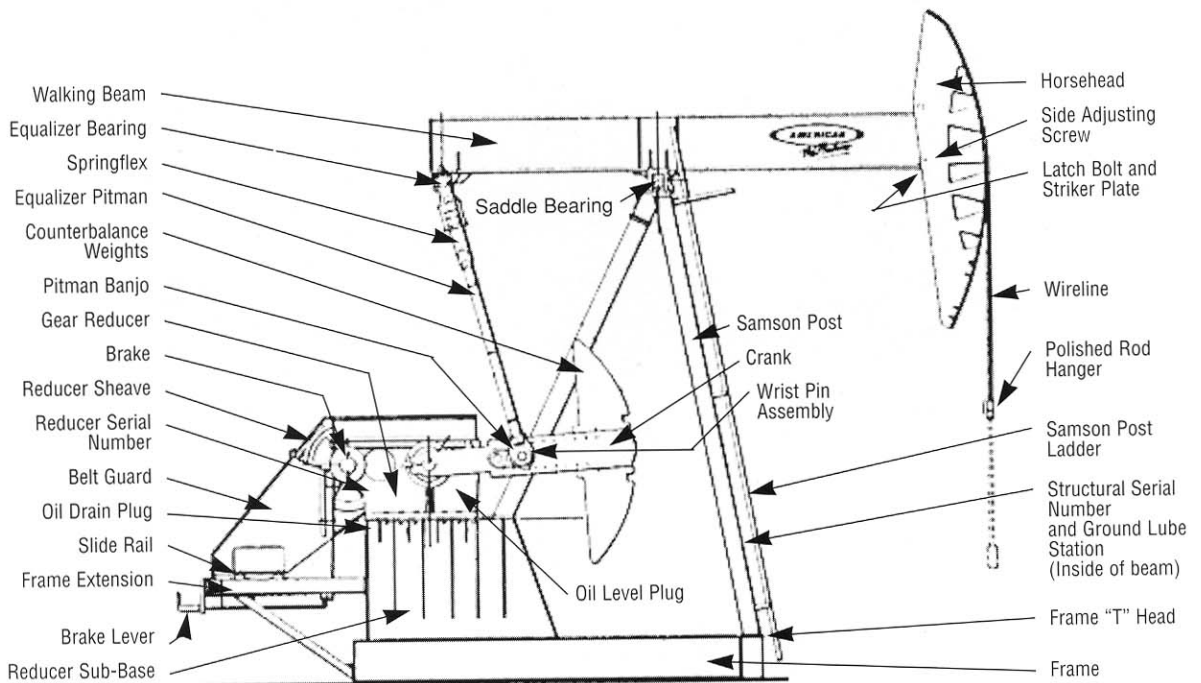
Herringbone gears.

Tough proven Herringbone double helical gears are less sensitive to mis-alignment and resist torque reversals.

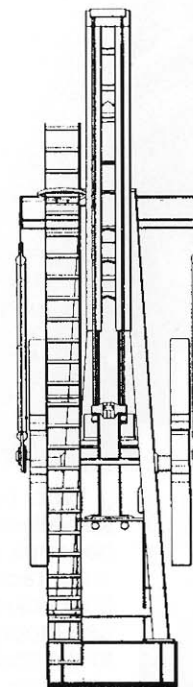
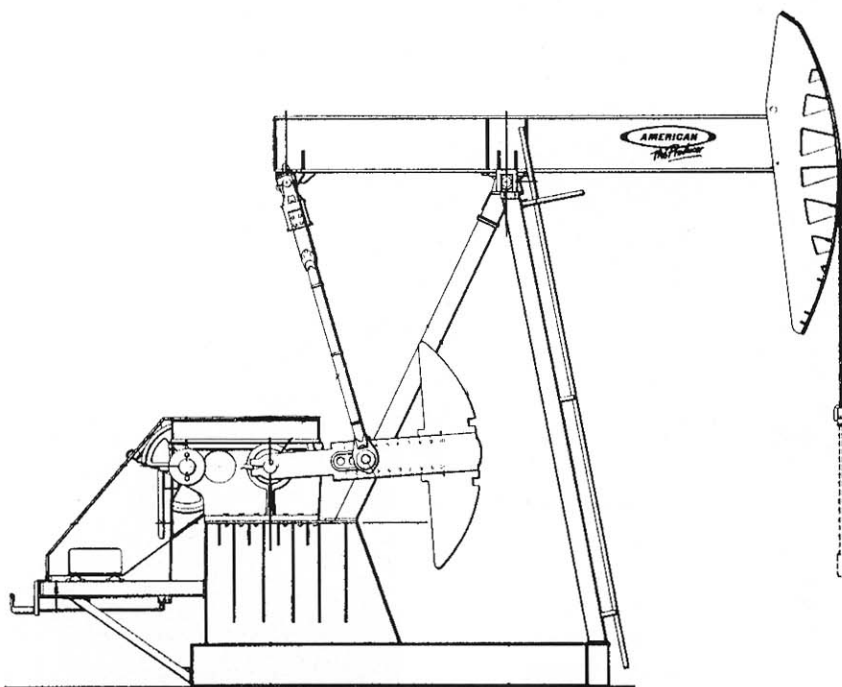




Pumping Unit Nomenclature



The Producer. Outline Dimensions

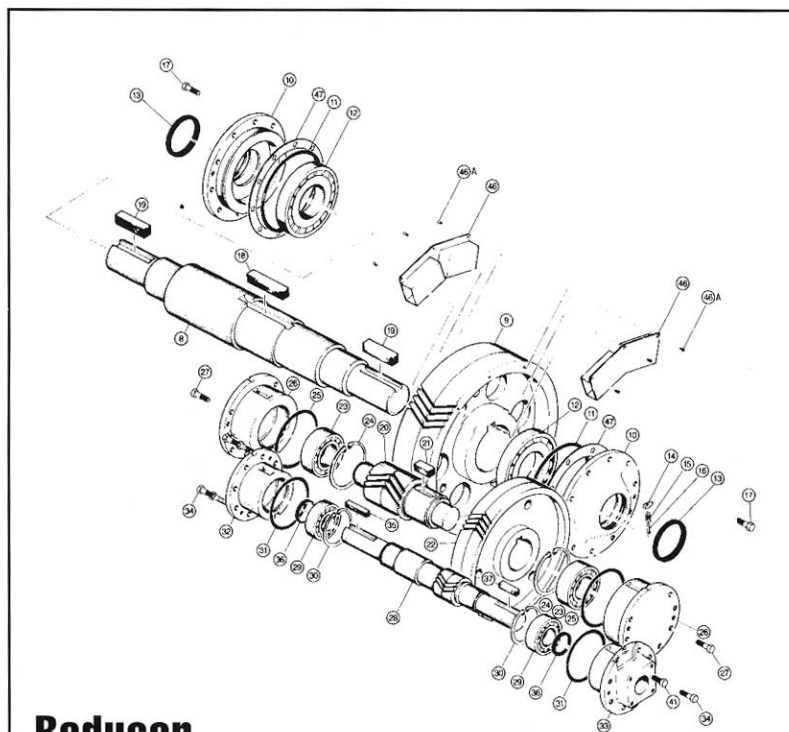


Crank guards not shown. Do not operate pumping units unless crank guards are in place. Minimum guarding required to be furnished by the API RP 11ER, Recommended Practice for Guarding of Pumping Units.

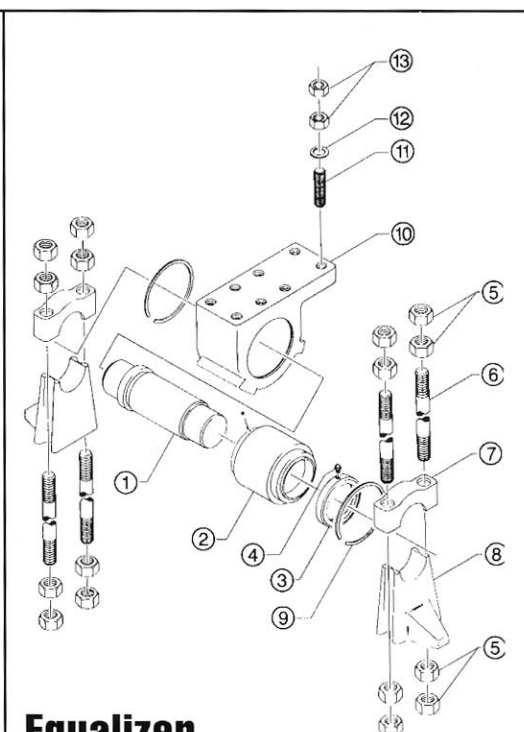
The AMERICAN **Producer** by LUFKIN is available in sizes up to the 1280-365-216, a 216 inch stroke with 36,500 pound polished rod capacity and 1,280,000 inch pounds of peak torque capacity.

Parts Replacement

Reducer, Wrist Pin and Equalizer Bearing.

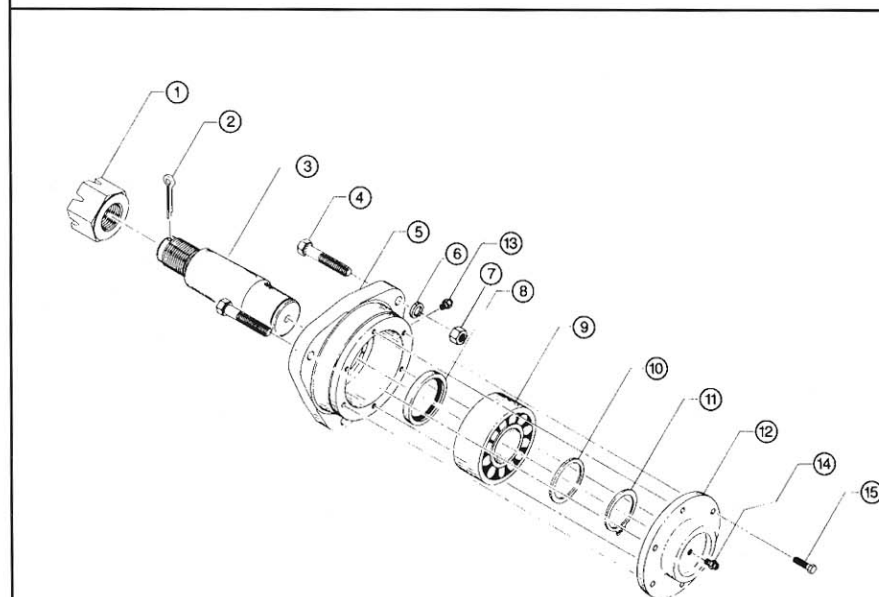


Reducer



Equalizer

ITEM DESCRIPTION	ITEM DESCRIPTION	ITEM DESCRIPTION	ITEM DESCRIPTION	ITEM DESCRIPTION	ITEM DESCRIPTION	ITEM DESCRIPTION
8 L.S. SHAFT	18 L.S. GEAR KEY	28 H.S. PINION	41 BOLT	1 EQUALIZER PIN	6 STUD BOLT	10 EQUALIZER BRG
9 L.S. GEAR	19 CRANK KEY	29 H.S. BEARING	46 OIL SCOOP	2 BEARING	7 CENTER CLAMP	11 HOUSING
10 L.S. BRG. HSG.	20 I.S. PINION	30 H.S. SNAP RING	46 A SCREW	3 RETAINING RING	8 CAP	12 STUD
11 O-RING L.S.	21 H.S. GEAR KEY	31 O-RING, H.S.	47 SHIM	4 GREASE FITTING	9 RETAINING RINGS	13 HARDENED
12 L.S. BEARING	22 H.S. GEAR	32 H.S. BRG. HSG. L.H		5 HEX. NUT		WASHER
13 DUST SEAL	23 I.S. BEARING	33 H.S. BRG. HSG. R.H				13 HEX. NUT
14 WIPER	24 SNAP RING	34 BOLT				
15 SPRING	25 O-RING, I.S.	35 SHEAVE KEY				
16 PIN	26 I.S. BRG. HSG	36 DUST SEAL				
17 BOLT	27 BOLT	37 BRAKE DRUM KEY				



Wrist Pin

ITEM DESCRIPTION

- 1 WRIST PIN NUT
- 2 COTTER PIN
- 3 WRIST PIN
- 4 BOLT
- 5 BEARING HOUSING
- 6 LOCK WASHER
- 7 HEX. NUT
- 8 OIL SEAL
- 9 WRIST PIN BEARING
- 10 SUPPORT WASHER
- 11 RETAINING RING
- 12 BEARING HOUSING CAP
- 13 RELIEF FITTING
- 14 GREASE FITTING
- 15 BOLT

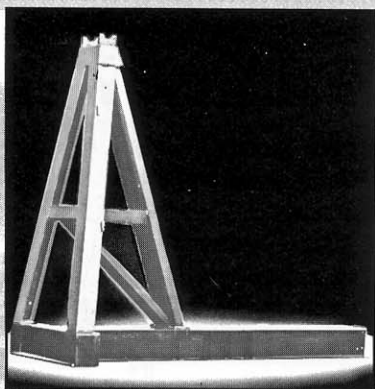
CHURCHILL®

Beam Balanced Pumping Units



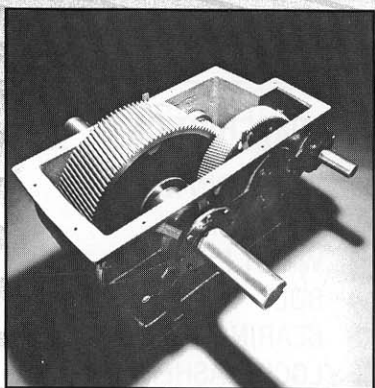
Structural Frames

Extensive use of wide flange beams and full-length welds make for a rugged structure capable of withstanding extreme well loads. Beam balanced units have slide rails that adapt to all prime movers.



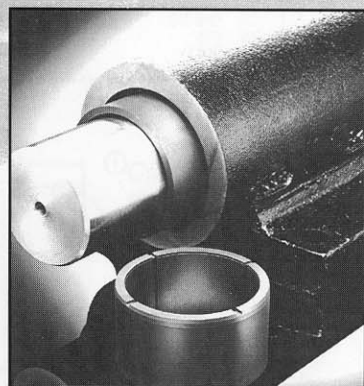
Gear Reducers

Precision cut helical gears are encased in a strong, heavy-walled cast-iron gear reducer housing. All gear reducer bearings are rated for over 100,000 hours L-10 life.



Horseheads

Horseheads on beam balanced units are easily detached for well servicing. A radius on the horsehead's support plate permits lateral adjustment for proper alignment of the wireline.

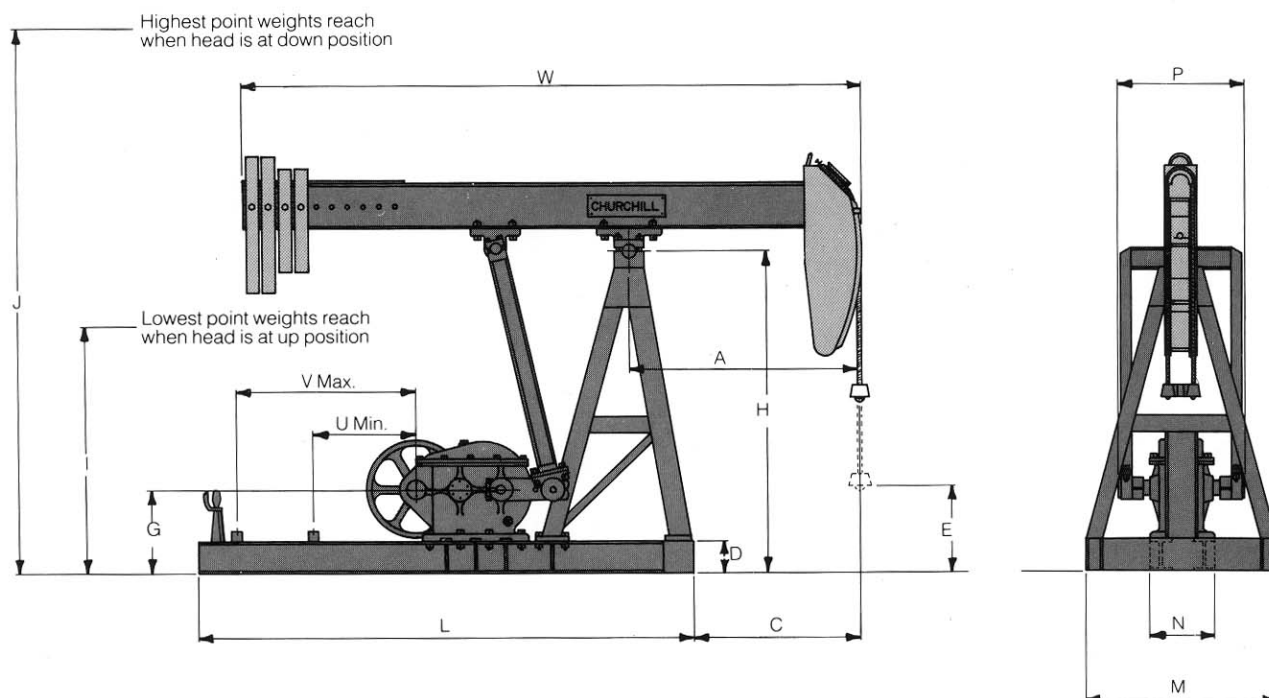


Bearings

Friction-Ease™ non-metallic bearings are durable and economical, are resilient to shocks and blows, have high lubricity, and are easily field replaceable.

CHURCHILL

Beam Balanced Pumping Units



Dimensional Data (inches)

Unit Size*	A	C	D	E	G	H	I	J	L	M	N	P	U	V	W
6.4-28-12	18.25	16.00	4	17.8	11.1	44.5	21.5	71.5	63.5	24.00	5.91	20.80	16	25.62	65.5
6.4-32-16	25.50	23.25	5	18.8	12.1	50.2	20.0	73.0	63.5	30.00	6.25	20.80	16	23.75	79.2
10-32-18	25.50	23.25	5	18.2	14.3	50.2	17.5	77.0	69.5	30.00	6.50	21.60	16	24.38	79.0
13-32-24	33.80	33.30	5	28.8	14.8	62.0	18.8	98.2	75.5	33.50	8.75	29.50	16	25.72	115.4
16-40-24	38.25	35.75	6	28.8	15.8	66.0	28.1	99.6	88.0	33.50	8.88	28.90	16	36.25	117.0
16-53-30	38.25	35.75	6	35.2	15.8	76.0	30.0	114.5	88.0	36.00	8.88	28.90	16	36.25	117.3
25-53-30	38.25	34.25	8	42.3	17.8	83.0	39.8	123.2	110.0	36.00	13.13	34.60	16	44.50	117.1
25-67-30	38.25	34.25	8	44.4	17.8	83.0	41.3	125.1	110.0	36.00	13.13	34.60	16	44.50	117.2
25-56-36	38.25	34.25	8	25.2	17.8	83.0	33.3	126.8	110.0	36.00	13.13	34.60	16	44.50	118.0
25-67-36	38.25	34.25	8	27.3	17.8	83.0	35.5	128.8	110.0	36.00	13.13	34.60	16	44.50	117.8
40-89-36	48.00	32.00	8	48.6	22.1	96.5	48.9	146.8	133.5	42.75	14.81	37.20	16	37.50	149.5
40-76-42	48.00	32.00	8	40.2	22.1	96.5	40.0	151.0	133.5	42.75	14.81	37.20	16	36.50	149.5
40-89-42	48.00	32.00	8	39.6	22.1	96.5	42.5	152.0	133.5	42.75	14.81	37.20	16	37.25	149.5
40-76-48	56.00	41.25	8	42.9	22.1	96.5	36.5	156.5	148.5	42.75	14.81	37.20	16	36.50	172.2
50-89-42	48.00	32.00	8	39.6	26.2	96.5	42.5	152.0	133.5	42.75	14.81	37.20	16	37.25	148.8
50-89-48	60.00	43.62	8	41.0	26.2	96.5	41.5	159.0	148.5	42.75	14.81	37.20	16	37.25	176.9
50-89-54	60.00	44.00	8	30.8	26.2	96.5	40.0	162.0	148.5	42.75	14.81	37.20	16	37.25	177.0
57-109-42	48.00	31.50	10	39.6	26.2	98.7	42.5	152.0	148.0	42.75	21.50	49.12	16	47.50	148.8
57-109-48	60.00	44.18	10	41.0	26.2	98.7	41.5	159.0	148.0	42.75	21.50	49.12	16	47.50	176.9
57-76-54	60.00	44.18	10	30.8	26.2	98.7	40.0	162.0	148.0	42.75	21.50	49.12	16	47.50	177.0
80-109-42	48.00	31.50	10	41.6	26.2	98.7	39.0	148.5	148.0	42.75	21.50	49.12	16	47.50	148.8
80-109-48	60.00	44.18	10	43.0	26.2	98.7	38.0	155.5	148.0	42.75	21.50	49.12	16	47.50	176.9
80-76-54	60.00	44.18	10	32.0	26.2	98.7	38.0	158.5	148.0	42.75	21.50	49.12	16	47.50	177.0
80-76-64	71.00	55.00	10	32.0	26.2	116.0	53.8	175.8	148.0	42.75	21.50	49.12	16	47.50	188.0

Note: Do not use above dimensions for foundation. Request foundation plan.

* Example: 40-89-36

40,000 in-pounds of peak torque

8,900 pounds of polished rod capacity

36 inches maximum stroke length

**FACTORY & EXECUTIVE OFFICES**

P. O. Box 849 (75902-0849)
601 South Raguet (75901)
Lufkin, Texas
Phone: 409/634-2211
Fax: 409/633-3563

LUFKIN RECONDITIONED UNIT SALES

Lufkin, Texas 75901
P.O. Box 849
Phone: 409/637-5301
Fax: 409/637-5785

DOMESTIC SALES & SERVICE CENTERS**Andrews, TX 79714**

P. O. Box 12
2340 N. US 385
Phone: 915/523-3836, 800-658-9612
Fax: 915/523-3972

Bakersfield, California 93308

2500 Parker Lane
Phone: 805/327-3563
Fax: 805/327-0690

Casper, Wyoming 82601

610 North Warehouse Road
Phone: 307/234-5346
Fax: 307/472-0723

Houston, Texas 77024

9821 Katy Freeway, Suite 900
Phone: 713/468-7804
Fax: 713/468-6880

Kilgore, Texas 75662-0871

P. O. Box 871
1-20 & Hwy 42
Phone: 903/984-3875
Fax: 903/984-2449

Levelland, TX 79336

P. O. Box 1594
West State Road 114
Phone: 806/894-2889, 800-658-9611
Fax: 806/894-2364

Lovington, NM 88260

P. O. Box 40
Artesia Highway
Phone: 505/396-2620, 800-658-9613
Fax: 505/396-5298

Odessa, Texas 79766

P. O. Box 1632 (79760)
13400 W. Hwy 80
Phone: 915/563-0363
Fax: 915/561-8203

Oklahoma City, Oklahoma 73143

P. O. Box 95205
2300 South Prospect
Phone: 405/677-0567
Fax: 405/677-7045

INTERNATIONAL**Argentina (Sales)**

LUFKIN Argentina S.A. (LASA)
Reconquista 656 6'h Floor A.
(1003) Buenos Aires, Argentina
Phone: 54-1-315-1641,
54-1-315-1642, 54-1-312-7620
Fax: 54-1-311-8181

Argentina (Plant)

Parque Ind. Comodoro Rivadavia
Macizo 3, Casilla de Correo 104
(9000) Comodoro Rivadavia - Chubut
Argentina
Phone: 54-97-481-750
Fax: 54-97-482-735

Canada (Sales)

Lufkin Industries Canada Ltd.
225 McDougall Place
#1050, 808-4th Avenue S.W.
Calgary, Alberta T2P 3E8 Canada
Phone: 403-234-7692
Fax: 403-25-6913

Canada (Plant)

1107-8'h A Street
Nisku Industrial Park
Nisku, Alberta T9E 7R3 Canada
Phone: 403-955-7566
Fax: 403-955-3359

Indonesia (Plant)

PT LUFKIN Indonesia
Jl. Tenggiri Kav. 21
Batu Ampar Pulau
Batam- Indonesia
Phone: 62-778-412-242
Fax: 62-778-412-283, 62-778-412-284

United States (Sales)

9821 Katy Freeway, Suite 900
Houston, Texas 77024
Phone: 713/468-7804
Fax: 713/468-6880

Venezuela (Plant)

LUFKIN de Venezuela, S.A. (LUFSA)
Carretera A Perija KM. 15
Maracaibo, Venezuela
Phone: 58-61-591-470, 58-61-594-129
Fax: 58-61-595-241, 58-61-592-282

INTERNATIONAL REPRESENTATIVES & DISTRIBUTORS

COUNTRY	REPRESENTATIVE/DISTRIBUTOR				
Africa (North & Central) and France	D.I.M.A.P.E. 42, bis rue de l'Est 92100 Boulogne, Billancourt, France Phone: 33-14-605-8200 Fax: 33-14-603-4799	Egypt	Tawakol Enterprises 70, El Thawra Street Heliopolis, Cairo, Egypt 11341 Phone: 20-2-291-6482 Fax: 20-2-291-7985	Peru	Al. Das Quaresmeiras, 45 Granja Julieta - Sao Paulo CEP 4716-070 - SP - Brasil Phone/Fax: 55-11-522-4493
	Z.I. Iduspal B.P.118 64143 Lons Cedex, Pau, France Phone: 33-55-962-0162 Fax: 33-55-962-0730	Indonesia	PT. IMECO Jl. Ampera Raya no. 9-10 Jakarta - 12550 - Indonesia Phone: 62-21-780-8068 Fax: 62-21-780-8055	Syria	Aqib USA, Inc. 110 East 59th Street New York, New York 10022-1374 U.S.A. Phone: 212-339-2100 Fax: 212-339-2191
Australia and New Zealand	Bayless Energy Services 163 Park Road, Yeerongpilly, Queensland, 4105, Australia Phone: 61-73-892-5270 Fax: 61-73-892-2240	Kuwait	Safwan Trading & Contracting Enterprises P.O. Box 20704 Safat 13068 Safat, Kuwait Phone: 965-481-1606, 965-481-6528 Fax: 965-484-8916, 965-483-2454	Trinidad	Process Components Limited 17-19 Maharaj Avenue Marabella, Trinidad, West Indies Phone: 809-652-3386 Fax: 809-652-0809
Austria, Hungary and Czechoslovakia	Premaberg Industrieanlagen Gesellschaft M.B.H. A-2362 Biedermansdorf Josef Madeersperger Str. 3, Austria Phone: 43-2236-76265-33 Fax: 43-2236-76265-6	Mexico	Cables Y Accesorios Del Sureste, S.A. De C.V.(CABSA) Francisco Marquez No.143 Col. Condesa, 06140, Mexico Phone: 525-211-2666 Fax No. 525-211-6097	Turkey	Agrimpex, Inc. 10600 Fallstone Road Houston, Texas 77099 U.S.A. Phone: 281-530-9858 Fax: 281-530-9613
Bolivia	Gamma, Ltda. Edif. Cosmos, Piso 8 of 2, Casilla 4316, Bolivia Phone: 59-12-323-271 Fax: 59-12-325-558	Oman	Oman Oilfields Supply Centre L.L.C. P.O. Box 1160, Ruwi, Postal Code 112 Sultanate of Oman Phone: 968-602-044 Fax: 968-699-730		Sub-Agent: Insmak 3511 Cinar Izmir, Turkey Phone: 232-486-1911 Fax: 232-486-3567
Brasil	Cotema Equipamentos Epocas Ltda. Rua Carlos Vicari, 317 - Aque Branca 05033-070 Sao Paulo/SP- Brasil Phone: 55-11-872-3922 Fax: 55-11-62-0697	Peru	Fauc International, Inc. 10211 West Sample Road, Suite 114 Coral Springs, Florida 33065 U.S.A. Phone: 954-344-7746 Fax: 954-341-9839	United Kingdom	Edward H. Mills Associates 2, Fernhill, Oxshott, Surrey, KT22 0JK, England Phone: 441-37-284-3067 Fax: 441-37-284-3067 Venezuela
Colombia	Lukiven, S.A. Avenida 15, No.129-52, Casa 1 Bogota - Colombia, S.A. Phone: 57-1-626-2549 Fax: 57-1-259-4866		Fauc International, Inc. Jr. Porta 170 - Oficina 903 Miraflores - Lima 18 Peru Phone/Fax: 51-14-448545	Venezuela	Lukiven, S.A. Circunvalacion #2, #111A-250 Frente Al Hotel Maruma Maracaibo, Venezuela Phone: 58-61-360-289, 58-61-360-516, 58-61-361-793 Fax: 58-61-360-087, 58-61-360-195, 58-61-361-697
Ecuador	The Ecuatex Group 5250 Guilford, Suite 2D Houston, Texas 77081 U.S.A. Phone: 713-661-2704 Fax: 713-661-6994		F-5C Ex Campamento Grana Talara - Peru Phone/Fax: 51-64-381112		

